

BITUMEN DEPOSIT



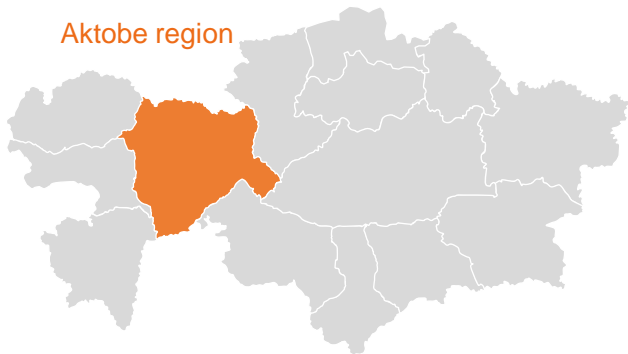
Product

Field reserves **C1 – 1.8 million tons**
C2 – 0.1 million tons

Global demand **100 million tons**

Location

Aktobe region

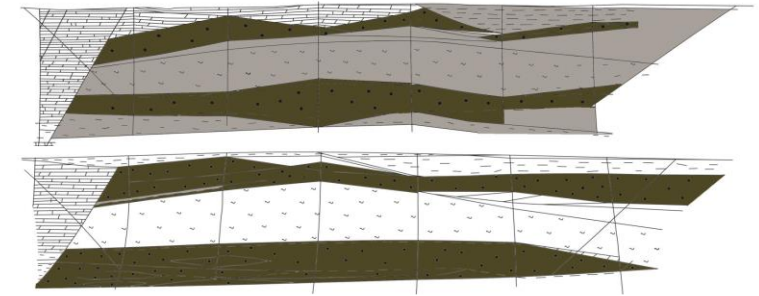


The Project

- The Company is registered in Astana International Financial Centre. The main activities of the Company include extraction of crude petroleum and natural gas.
- Project phase: The contract was concluded for the production of hydrocarbons (Bitumen) up to 25 years
- The fund of drilled wells in the oilfield: 212 with a total depth 8,479 m
- The deposit has been explored in detail by drilling on a 50 x 25m grid
- The field of 0.310 sq. km has an approved reserves estimate for bituminous formations
- Possibility to develop the deposit by open-pit method;
- Bitumen content in the formation is up to 23.2%;
- Bitumen composition: Oils: 71-72%; Resin: 22-26%; Asphaltenes: 2.4-4.9 %

Geological section map

- The presence of two proven deposits of bitumen
 1. Senomanian: 600 x 200 m
Horizon thickness: 20 meters
 2. Upper Albian: 600 x 190 m
Horizon thickness: 20 meters
- Depth of productive deposits: up to 54 m
- Reservoir type: terrigenous
- The upper and lower deposits are separated from each other by a sandy argillaceous rocks up to 20.5 m thick



■ - Productive horizons (bitumen containing)



The Market

- The bitumen market was estimated at over 100 million metric ton in 2020, and the market is projected to register a CAGR of more than 4 % during the forecast period (2022-2027)
- Increasing Demand Due to Increasing Road Construction Activities
- Most of the bitumen consumed is processed into asphalt for road construction. Asphalt is a mixture of rock aggregates and bitumen. Bitumen serves as a binding agent and is responsible for the stability of asphalt
- Depending on the type of bitumen or composition of the mixture used, asphalt roads can be made suitable for regions with different climatic conditions or various levels of operational demands. Asphalt is also used for airport runways, parking decks, and working areas in ports
- In developing economies in Asia-Pacific, infrastructure activities are expected to increase significantly, especially in the transportation sector, owing to increasing urbanization and shifting focus toward developing secondary sectors in these countries



Investment Opportunity

- The Company is looking for full exit opportunities.